

SSFA comparison

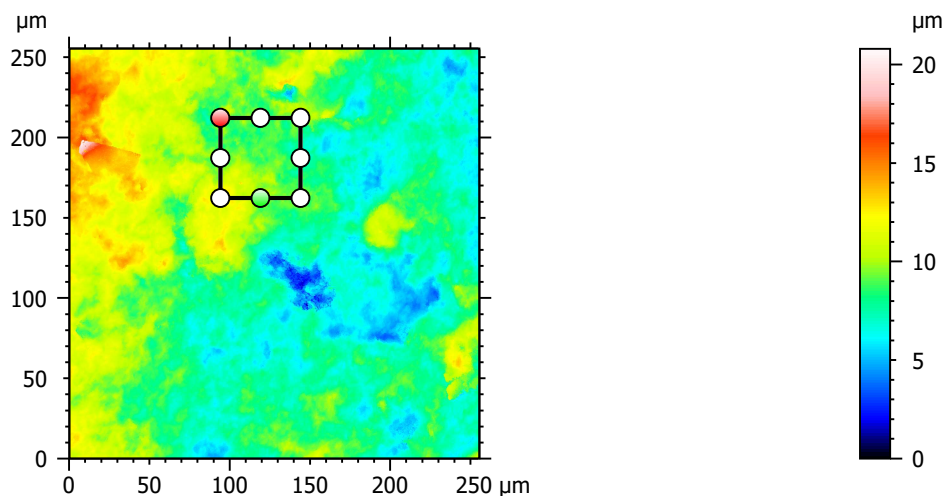
Template to process all lithic surfaces acquired with the Zeiss LSM 800 with the 50x/0.95 objective.

A. Processing

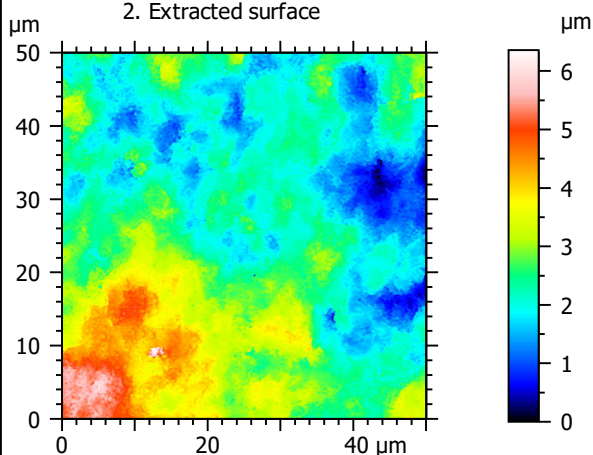
Identity card

Name:	FLT3-10_LSM2_50x-0.95_20190731_Area2_Topo		
File path:	D:\Data\3Ddata\SSFA\Lithics\Original surfaces\FLT3-10_LSM2_50x-0.95_20190731_Area2_Topo.sur		
Created on:	7/31/2019 2:49:31 PM		
Studiable type:	Surface		
Axis:	X		
Length:	255.5	µm	
Size:	3000	points	
Spacing:	0.08519	µm	
Axis:	Y		
Length:	255.5	µm	
Size:	3000	points	
Spacing:	0.08519	µm	
Axis:	Z		
Layer type:	Topography		
Length:	20.79	µm	
Size:	65532	digits	
Spacing:	0.0003173	µm	
NM-points ratio:	0.000 % (0 Pts)		

1. Acquired surface

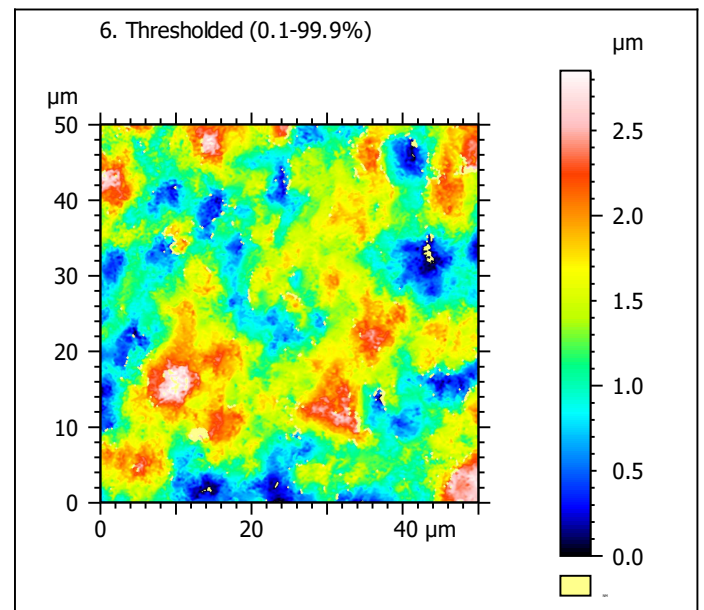
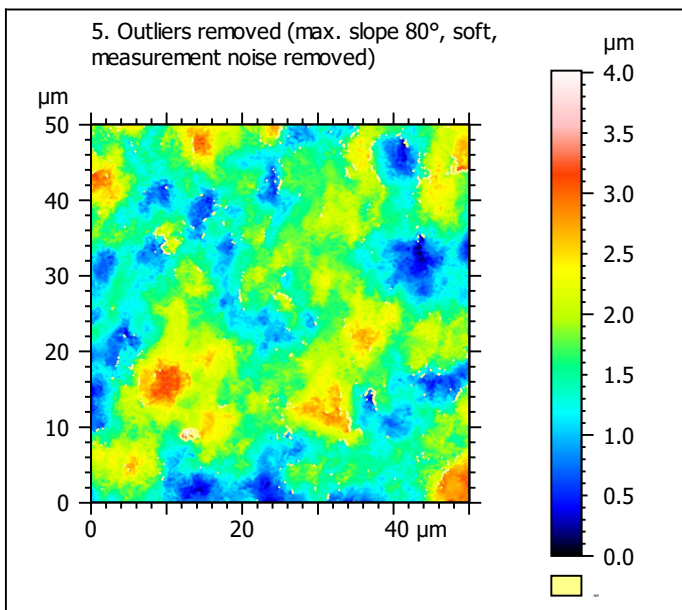
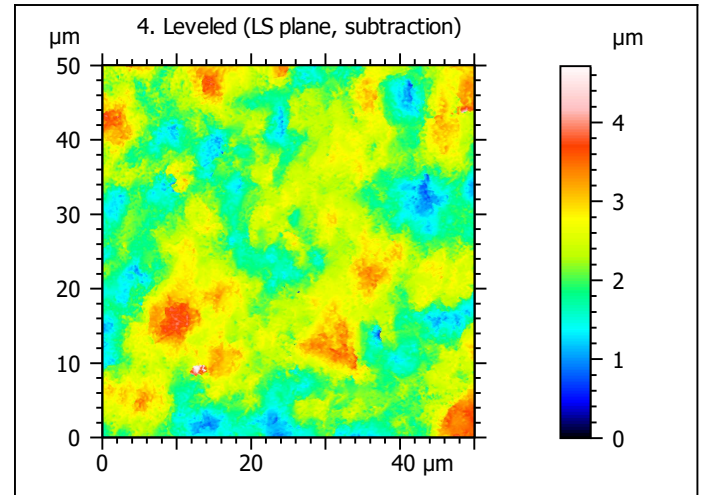
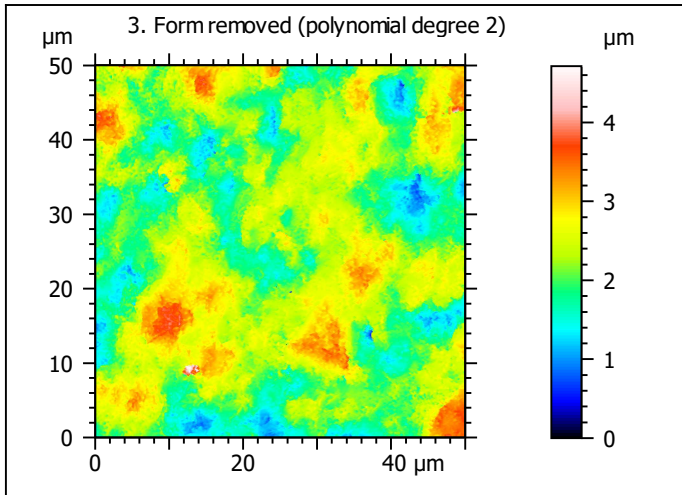


2. Extracted surface



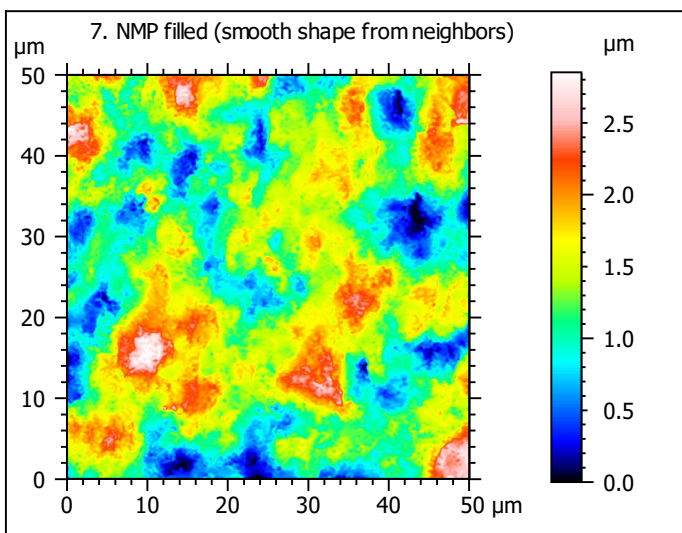
Identity card

Name:	FLT3-10_LSM2_50x-0...opo > Extracted area		
Axis:	X		
Length:	50.00	µm	
Size:	588	points	
Axis:	Y		
Length:	50.00	µm	
Size:	588	points	
Axis:	Z		
Layer type:	Topography		
Length:	6.358	µm	
Size:	20040	digits	
NM-points ratio:	0.000 % (0 Pts)		

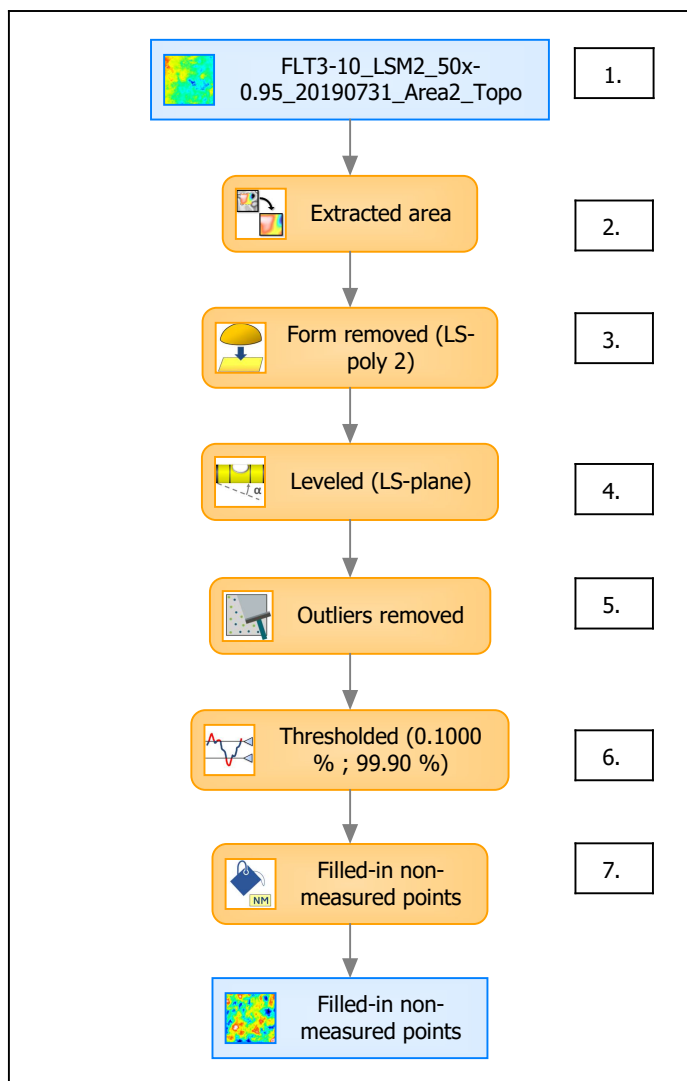


Identity card	
Name:	FLT3-10_LSM2_50x-0...e) > Outliers removed
Axis:	Z
NM-points ratio:	1.865 % (6449 Pts)

Identity card	
Name:	FLT3-10_LSM2_50x-0...0.1000 % ; 99.90 %)
Axis:	Z
NM-points ratio:	2.061 % (7126 Pts)



B. Summary



Identity card

Name: FLT3-10_LSM2_50x-0.95_20190731_Area2_Topo > Extracted are...resholded (0.1000 % ; 99.90 %) > Filled-in non-measured points

Studiable type: Surface

Axis: X

Length: 50.00 μm
Size: 588 points
Spacing: 0.08519 μm

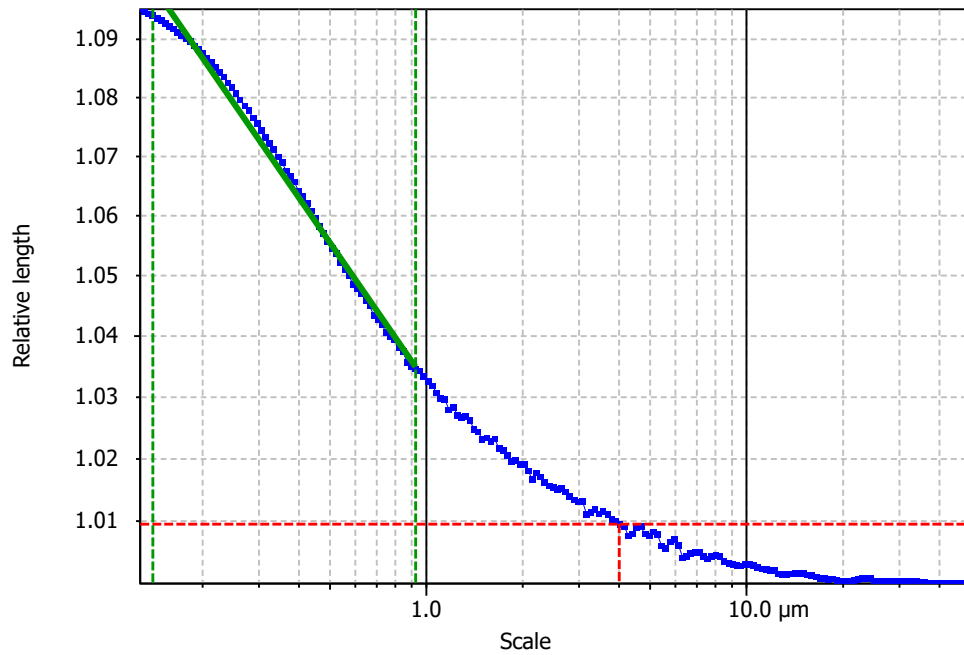
Axis: Y

Length: 50.00 μm
Size: 588 points
Spacing: 0.08519 μm

Axis: Z

Layer type: Topography

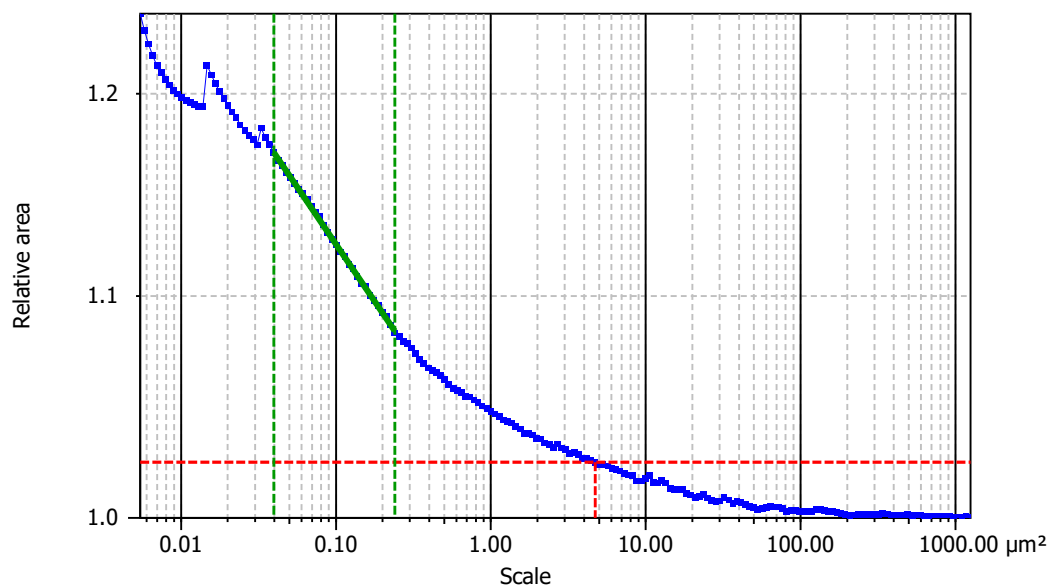
Length: 2.852 μm
Size: 8989 digits
Spacing: 0.0003173 μm

**Information**

Method	Length-scale (rows)
--------	---------------------

Parameters

Parameters	Value	Unit	Comment
epLsar	0.00147		Length-scale anisotropy (<i>Sfrax</i>) (1.8 μm, 5°)
NewEplsar	0.01737		Length-scale anisotropy (1.8 μm, 5°)

**Information**

Method	Area-scale (four corners)
--------	---------------------------

Parameters

Parameters	Value	Unit	Comment
R ²	0.9993		Reg. coefficient R ²
Asfc	42.70		Fractal complexity
Smfc	0.1005	μm ²	Scale of max complexity
HAsfc9	0.1675		Heterogeneity of Asfc (3x3)
HAsfc81	0.2166		Heterogeneity of Asfc (9x9)